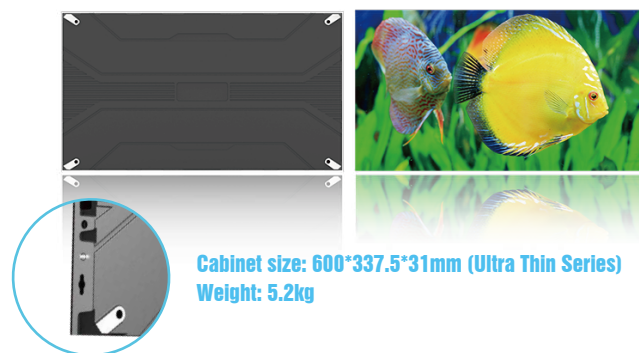


Ultra HD Fine Pitch LED Display



Designed for small pixels solution application, it can deliver crystal clear images and vibrant colors, capturing audience's attention and creating unforgettable visual experience.



HD



High
Grayscale



Quick
Installation



Super wide
Viewing Angle



Easy To
Maintain



Seamless
Stitching



Magnetic
Adsorption



Low Power
Consumption

High Reliability

- The interior adopts integrated design, No wiring, high reliability to ensure stable operation, and a clean internal structure.



Ultra-thin series

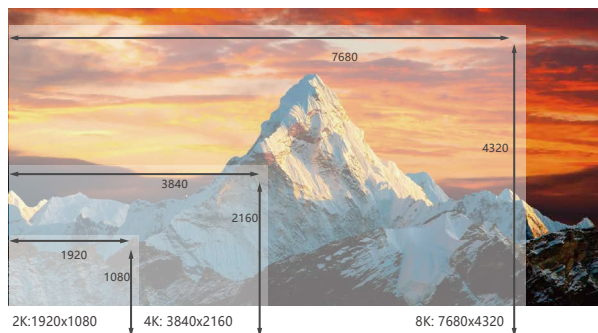


Conventional series

INTEGRATED POWER SUPPLY

16:9 Perfect Sizing

- With standardized aspect ratio ideal for eyes, the 16:9 can perfectly match mainstream video and content sources without distortion.



Magnetic Module

- Magnetic secured modules are connected in a cable-free manner, which significantly improves the stability as well as maintenance efficiency.

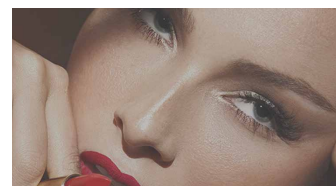


High definition LED display

- Uses high brightness matte black LEDs, guaranteeing low attenuation, high reliability, good consistency and superior weather resistance.
- With a high contrast ratio 5000:1, provides exceptionally vivid images.



High Contrast



Low Contrast

Seamless Splicing

- Locating pins and die-cast aluminum structure ensure excellent alignment and jointing of between cabinets.



Superior Heat
Dissipation Performance



Silent Running

Compact & Lightweight

- Because of die-cast aluminum structure with high precision, The cabinet weighs only 5.8KG, ensuring a quick, easy installation.



Conventional series

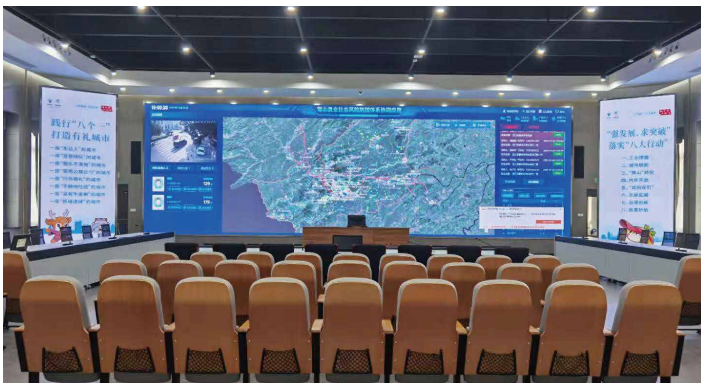


Ultra-thin series

Technical parameter: (T=25°C)

Pixel Pitch	0.9375mm	1.25mm	1.44mm	1.5625mm	1.875mm	2.34mm
Pixel Structure	1R1G1B	1R1G1B	1R1G1B	1R1G1B	1R1G1B	1R1G1B
Pixel Density	1137777/m ²	640000/m ²	480716/m ²	409600/m ²	284444/m ²	182044/m ²
Module Resolution	320X180 dots	240X135 dots	208X117 dots	192X108 dots	160X90 dots	128X72 dots
Module Size (WXH)	300X168.75mm	300X168.75mm	300X168.75mm	300X168.75mm	300X168.75mm	320X168.75mm
White Balance Brightness	600cd/m ²	600cd/m ²	600cd/m ²	600cd/m ²	600cd/m ²	600cd/m ²
Color Temperature	2000K—12500K	2000K—12500K	2000K—12500K	2000K—12500K	2000K—12500K	2000K—12500K
Horizontal Viewing Angle	≥160°	≥160°	≥160°	≥160°	≥160°	≥160°
Vertical Viewing Angle	≥140°	≥140°	≥140°	≥140°	≥140°	≥140°
Optimal Viewing Distance	≥1 m	≥1 m	≥1 m	≥1 m	≥1 m	≥2 m
Contrast	≥5000:1	≥5000:1	≥5000:1	≥5000:1	≥5000:1	≥5000:1
Grayscale	12-14Bit	12-14Bit	12-14Bit	12-14Bit	12-14Bit	12-14Bit
Refresh rate	≥3840HZ	≥3840HZ	≥3840HZ	≥3840HZ	≥3840HZ	≥3840HZ
Continuous Working Time	≥72H	≥72H	≥72H	≥72H	≥72H	≥72H
Life Span	100,000 H	100,000 H	100,000 H	100,000 H	100,000 H	100,000 H
Operating Voltage	DC 4.2-5V	DC 4.2-5V	DC 4.2-5V	DC 4.2-5V	DC 4.2-5V	DC 4.2-5V
Maximum Power Consumption	700W/m ²	700W/m ²	700W/m ²	700W/m ²	700W/m ²	700W/m ²
Average Power Consumption	260W/m ²	260W/m ²	260W/m ²	260W/m ²	260W/m ²	260W/m ²

Seamless Splicing



Tel (INT): 86-0755 8219 7586

Add.: 1001, Building 1, Guole Technology Park, No. 1
Lirong Road, Longhua District, Shenzhen, Guangdong, China

Website (INT): www.crtop-led.com

SHENZHEN CRTOP CO., LTD.